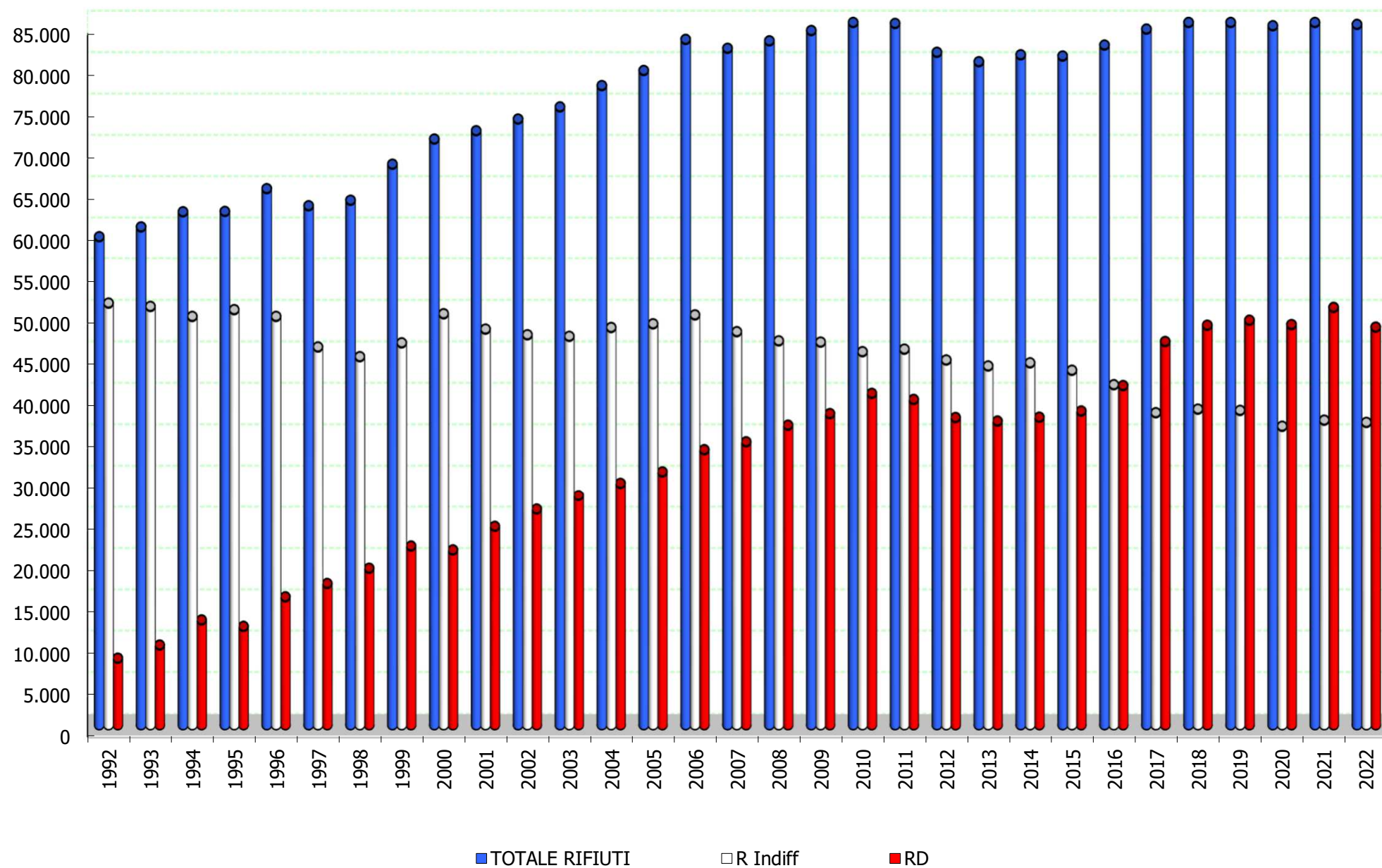


ANNO	TOTALE RIFIUTI	R Indiff	RD	% RD
1992	59.108,0	51.018,0	8.090,0	13,7
1993	60.292,0	50.615,0	9.677,0	16,1
1994	62.121,0	49.411,0	12.710,0	20,5
1995	62.166,0	50.227,0	11.939,0	19,2
1996	64.918,0	49.414,0	15.504,0	23,9
1997	62.849,0	45.730,0	17.119,0	27,2
1998	63.516,0	44.560,0	18.957,0	29,8
1999	67.869,0	46.227,1	21.642,0	31,9
2000	70.909,0	49.731,1	21.177,9	29,9
2001	71.912,7	47.884,8	24.027,9	33,4
2002	73.326,4	47.201,7	26.124,7	35,6
2003	74.797,0	47.015,7	27.781,3	37,1
2004	77.371,4	48.077,9	29.293,5	37,9
2005	79.194,3	48.520,1	30.674,2	38,7
2006	82.953,1	49.595,9	33.357,2	40,2
2007	81.876,0	47.573,7	34.302,3	41,9
2008	82.777,0	46.468,4	36.308,6	43,9
2009	84.022,0	46.317,0	37.705,0	44,9
2010	85.305,5	45.162,5	40.143,0	47,1
2011	84.878,5	45.466,3	39.412,2	46,4
2012	81.392,9	44.161,5	37.231,4	45,7
2013	80.253,7	43.445,1	36.808,6	45,9
2014	81.092,0	43.822,0	37.270,0	46,0
2015	80.941,0	42.924,0	38.017,0	47,0
2016	82.270,0	41.186,0	41.084,0	49,9
2017	84.197,0	37.807,0	46.390,0	55,1
2018	86.592,0	38.241,0	48.351,0	55,8
2019	87.044,0	38.089,0	48.955,0	56,2
2020	84.606,0	36.176,7	48.429,2	57,2
2021	87.415,0	36.909,4	50.505,5	57,8
2022	84.764,0	36.640,3	48.123,7	56,8



*i quantitativi sono espressi in tonnellate*

LEGENDA:

*R Indiff = Rifiuti Indifferenziati*

*RD = Raccolta Differenziata*